

Motic®

MORE THAN MICROSCOPY



B1 Elite Series

UPRIGHT BIOLOGICAL MICROSCOPES

DESIGNED FOR EFFICIENCY AND ENDURANCE



B1 Elite Series



Monocular,
Binocular or
trinocular head



Quadruple
nosepiece



Semi-Plan
objectives



Rackless
mechanical stage



Coaxial focusing
coarse & fine



LED
illumination



Motic's B1 series has long been a pillar of reliable and competitive microscopy for basic work in biology and medicine. The Semi-Plan Achromat objectives, mounted in a 4-fold nosepiece, are used to examine transparent samples, such as sections and smears. The built-in rackless stage with sample holder enables a safe x/y movement, especially for inexperienced users. All B1 models offer a 3W LED illumination system, as well as a focusable 1.25 N.A. Abbe condenser, which carries an iris diaphragm to contrast native and weakly stained samples. Phase contrast is possible by the optional Ph10X/0.25 and Ph40X/0.65 objectives and the respective plug-in Phase attachments. The addition of polarization contrast for the examination of urine sediments can be done easily.

Make documentation and photography a snap



HDMI



USB



Wi-Fi



RJ-45

DATA TRANSFER



SOFTWARE SOLUTIONS



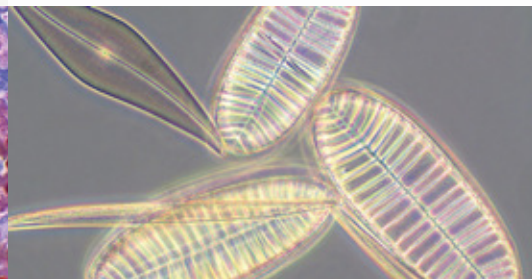
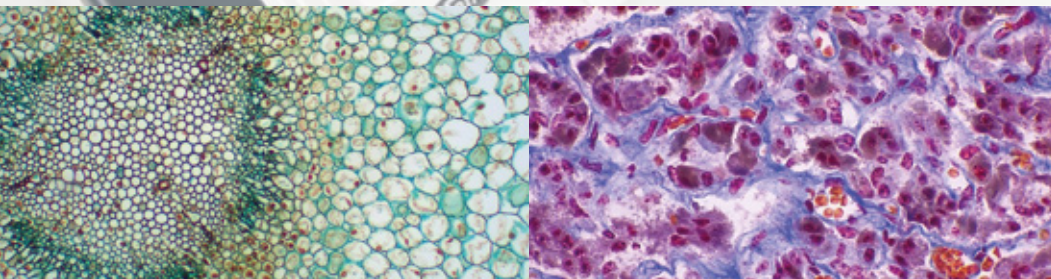
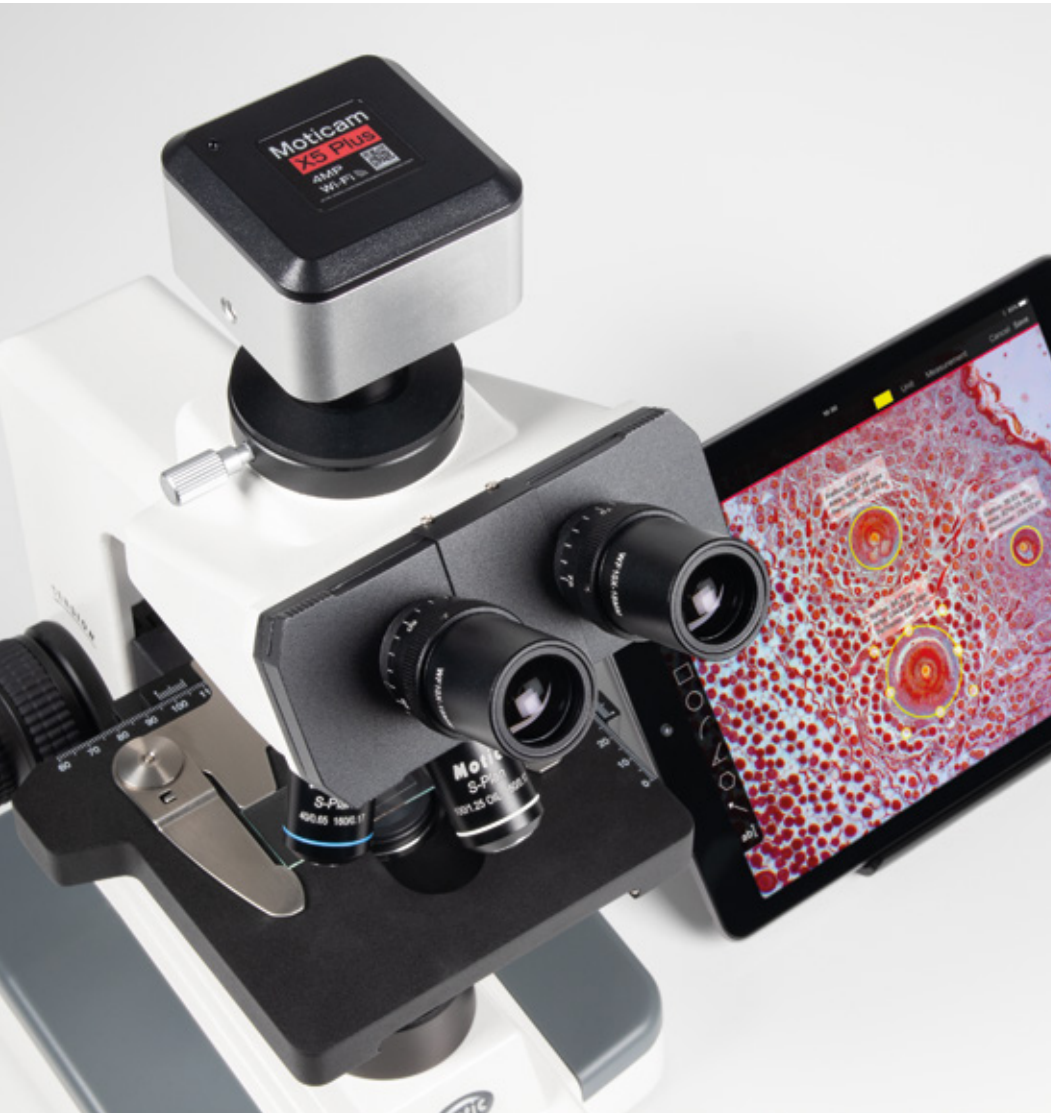
MotiConnect App
for mobile devices



Motic Images Plus and
MotiConnect for computers



Embedded App / Software to
work with screens and projectors



Get the most out of your lab with Moticam's digital solutions. Display your samples on your computer, tablet, smartphone or using a TV screen or projector and view, capture, edit, measure, create reports, and easily share your work with anyone in just a few clicks. The software solutions included in our packages feature a user-friendly interface, making for a collaborative environment by enabling effortless data sharing, encouraging teamwork, and fostering collective learning experiences.

Visit www.moticamseries.com to discover all Moticam solutions



Technical Specifications



| Name | B1-211E-SP | B1-220E-SP | B1-223E-SP |
|-----------------------------------|--|------------------------------|-------------------------------|
| Optical system | Finite optical system, 160mm | | |
| Observation tube | Monocular head | Binocular head, sliding type | Trinocular head, sliding type |
| Inclination | 45° inclined, 360° rotating | | 30° inclined, 360° rotating |
| Trinocular light split | - | | 100:0:0:100:30:70 |
| Interpupillary distance | 55-75mm | | |
| Diopter adjustment | On both tubes, +/- 5 diopter | | |
| Eyepieces | Widefield WF10X/18mm | | |
| Nosepiece | Quadruple | | |
| Objective classification | SP Semi-Plan Achromatic, DIN | | |
| Objectives Standard Config. | 4X/0.10 (WD 17.9mm), 10X/0.25 (WD 5.3mm), 40X/0.65/S (WD 0.61mm), 100X/1.25/S-Oil (WD 0.165mm) | | |
| (4X, 10X, 40X) Configuration | 4X/0.10 (WD 17.9mm), 10X/0.25 (WD 5.3mm), 40X/0.65/S (WD 0.61mm) | | |
| (4X, 10X, 40X, 60X) Configuration | 4X/0.10 (WD 17.9mm), 10X/0.25 (WD 5.3mm), 40X/0.65/S (WD 0.61mm), 60X/0.85/S (WD 0.12mm) | | |
| Objective mounting thread | W 4/5"x1/36" (RMS standard) | | |
| Stand type | Upright | | |
| Stage | Mechanical stage with built-in low position rackless coaxial stage control and sample holder | | |
| Stage size | 140x135mm | | |
| Travel range X&Y | 76x40mm | | |
| Condenser | Focusable Abbe Condenser N.A. 1.25 | | |
| Diaphragm | Iris diaphragm | | |
| Focus mechanism | Coaxial coarse and fine focusing system with tension adjustment | | |
| Fine focus precision | 2µm | | |
| Focusing stroke | 27mm | | |
| Upper limit stop | Upper limit stop preset but adjustable | | |
| Transmitted illumination | LED 3W with intensity control | | |
| Transformer | External | | |
| Power supply | 110-240V (CE) | | |
| Accessories included | Dust cover, immersion oil (5ml) | | |
| Dimensions LxWxH | 245x190x380mm | | |
| Net weight | 6.8kg | | |
| Notes | Transport and storage case | | |
| CONTRAST TECHNIQUES | | | |
| Brightfield | Brightfield | | |
| Phase contrast | Optional plug-in | | |
| Polarization | Optional add-on | | |
| Darkfield | Optional plug-in | | |

Design Change: The manufacturer reserves the right to make changes in instrument design in accordance with scientific and mechanical progress, without notice and without obligation.

*CCIS® is a trademark of Motic Incorporation Ltd. Motic Incorporation Limited Copyright © 2002-2023. All Rights Reserved.

Created and designed in Barcelona (Spain) by Motic Europe, January 2023.
Photomicrographies courtesy of ©Willem Cramer and ©MoticEurope



ISO 9001:2000, ISO 14001:2004 and ISO 13485 Certified.

Motic Europe

Motic Deutschland (Germany)

Charlotte-Bamberg-Str. 6, 35578 Wetzlar, Germany
Tel: +49 644 121 0010

Motic Europe (Spain)

C. Les Corts 12, Pol. Ind. Les Corts.
08349 Cabrera de Mar, Barcelona, Spain
Tel: +34 93 756 62 86